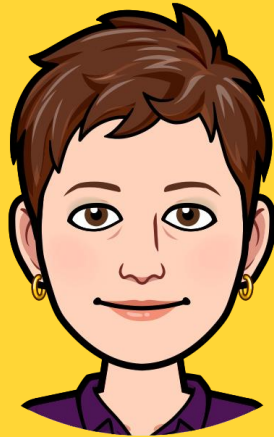


Building Community Connections through the NEA Big Read Grant



Presenters



Jennifer Hofer



Barbara Hughey
Reardon

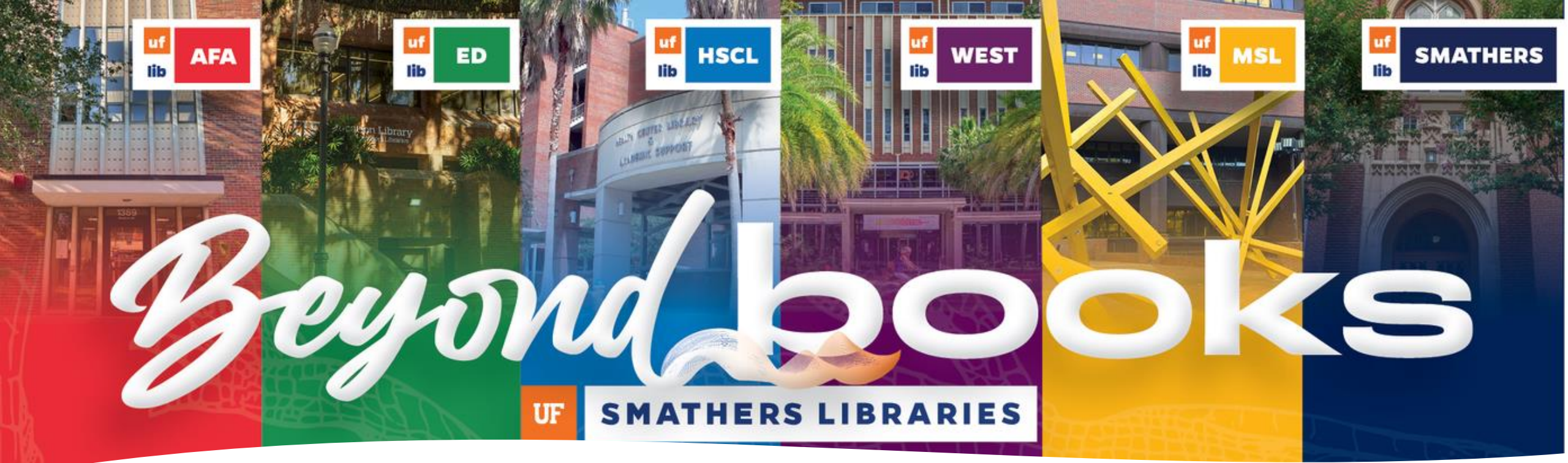


Kestrel Ward

Key Takeaways

- Discover ways academic libraries can connect with public libraries and other community partners.
- Explore strategies for coordinating efforts between multiple institutions.
- Learn about the advantages of partnering with a public library to improve community outreach.





George A. Smathers Libraries

- The Smathers Libraries collaborate with UF faculty, students and staff, as well as the University's collaborators and constituents, to facilitate knowledge creation that contributes to UF's standing as a preeminent public research university. The Libraries encourage creativity and inquiry necessary to support the University's global ambitions and play an important role in attracting and retaining top students, faculty and staff.
- The Libraries ignite curiosity, serve as the locus of knowledge management, and promote intellectual exchange within our diverse global learning community.

Alachua County Library District

A key to building a better community by creating opportunities to *participate*, *connect* and *discover*.

- Core Values:
 - Diversity of people and ideas
 - Free and equal access
 - Excellent and innovative service
 - Open exchange of ideas



Typical Academic-Public Library Partnerships

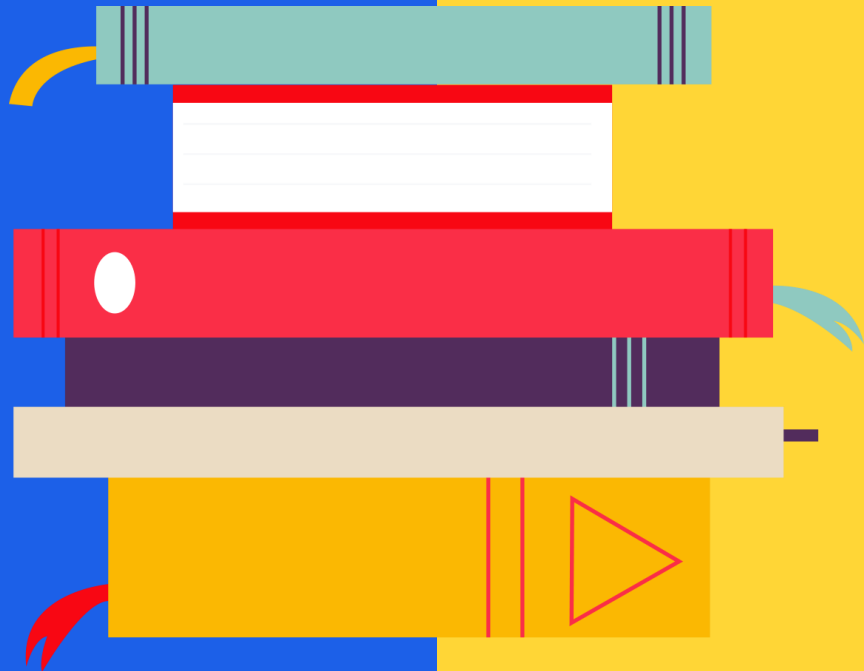
- Shared Spaces
- Shared Collections
- Specialist Programs
- Outside the Libraries





The NEA Big
Read

- 
- NEA and Arts Midwest
 - \$5000 - \$20,000 matching grants
 - Selection of Books
 - Programming Requirements
 - Kick-off
 - Book Discussions
 - Presentations
 - Activities
 - Community Partnerships



Origins of the Grant Proposal

- UF Libraries Grants Manager
- Building a Team
- Approaching Barbara

Building Partnerships

- Public Libraries
- Community Partners
 - [The Gainesville Immigrant Neighbor Inclusion Initiative](#)
 - Eastside High School



Keys to Successful Collaboration



Communication



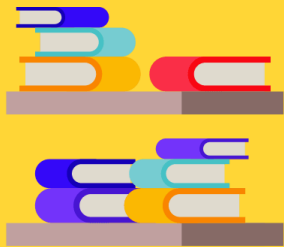
Identifying Roles



Documentation

Changing Directions

- Grant Not Awarded
- Continuing the Partnerships
 - Banned Books Week
 - Reapplying Next Year





Lessons Learned



Same Field, Different Strengths

- Shared language
- Similar missions
- Different skillsets



Navigating Multiple Bureaucracies

- Getting Approvals
- Determining Budgets
- Governance



Individual Lessons

Contact Us

Jennifer Hofer

University of Florida
jennh@ufl.edu

Barbara Hughey Reardon

Alachua County Library
District
bhughey@aclib.us

Kestrel Ward

University of Florida
gryphlet@ufl.edu



Presentation template by

PPTMÖN.com

<http://pptmon.com/> Ctrl + Click to follow link